

OFFICE SPACE TO LET



3 PUMP LANE

THAME, OXFORDSHIRE, OX9 3BT

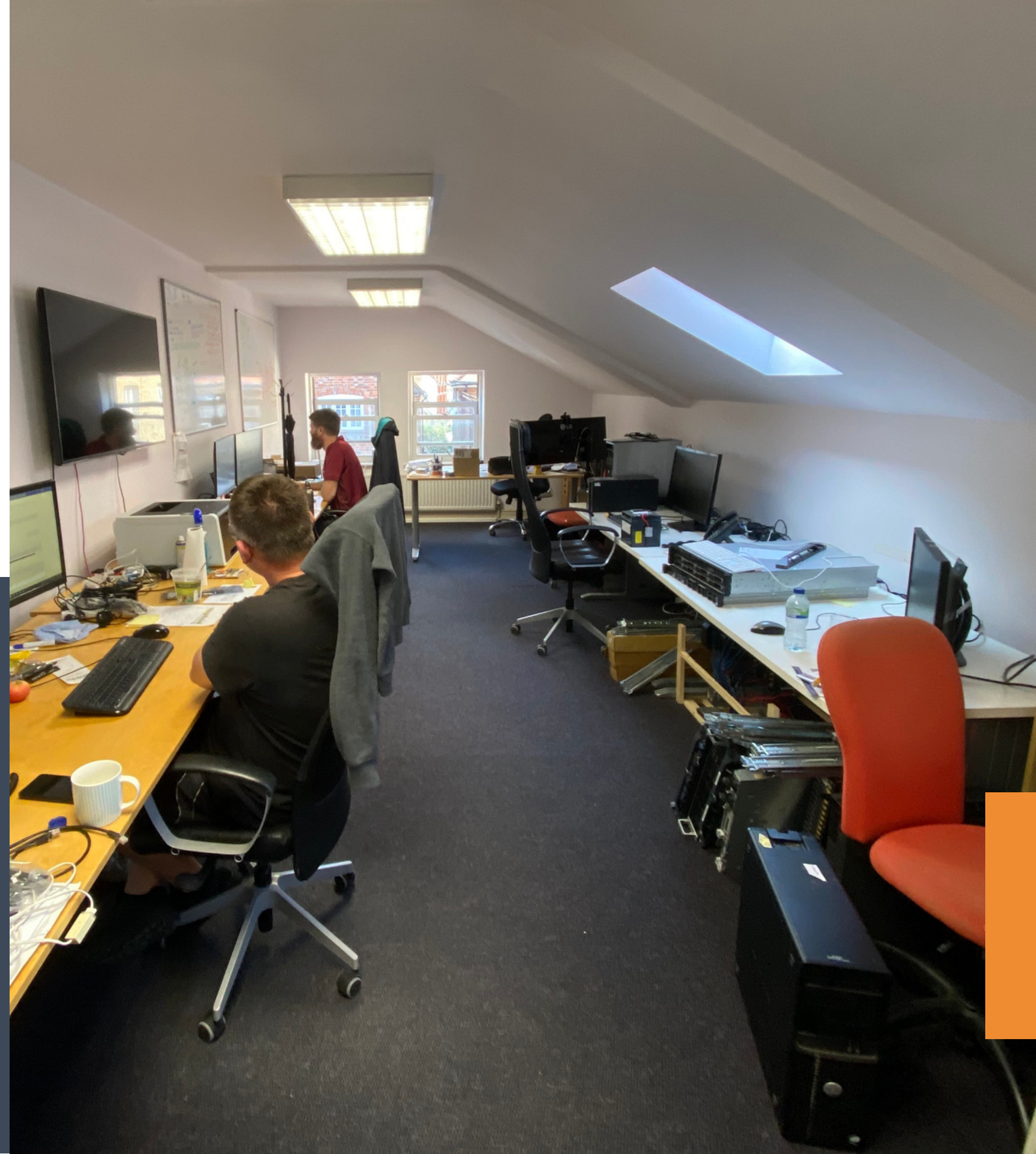
1ST FLOOR 1,224 SQ FT (113.71 SQ M)

CHARACTER OFFICE SUITE TO LET

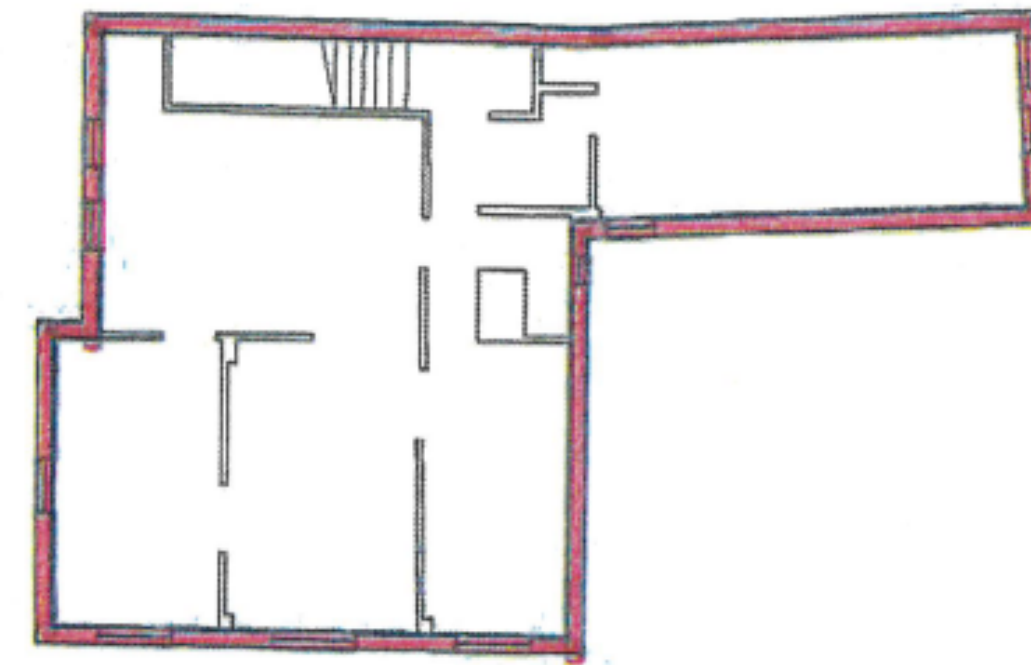
Rent: £19,500 pa
Business rates: TBC

Conveniently located in a prominent position on the corner of Pump Lane and Buttermarket in the centre of the thriving old market town of Thame.

This self-contained office suite is full of character and on the doorstep of a range of amenities.



FLEXIBLE SPACE



First Floor

1ST FLOOR

The available accommodation on the 1st floor totals 1,224 sq. ft. of characterful office space with attractive exposed timbers.

The self contained suite has a mix of open plan accommodation and private offices or meeting rooms.

The suite has a private door entry system and security system.

2 car spaces are included within the lease.

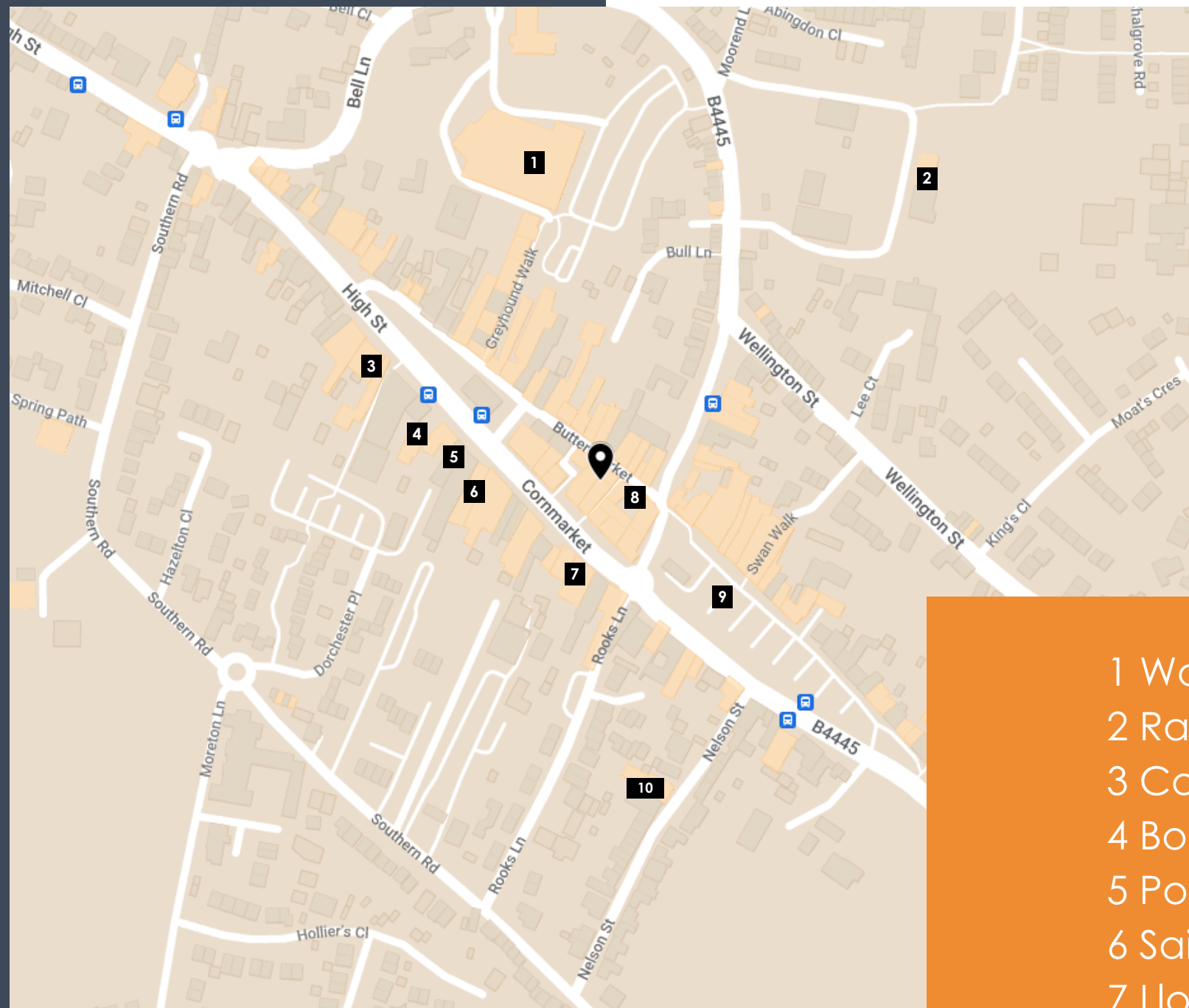


LOCATION

A vibrant market town in the heart of Oxfordshire, Thame is home to many historic buildings, beautiful parks and a bustling high street.

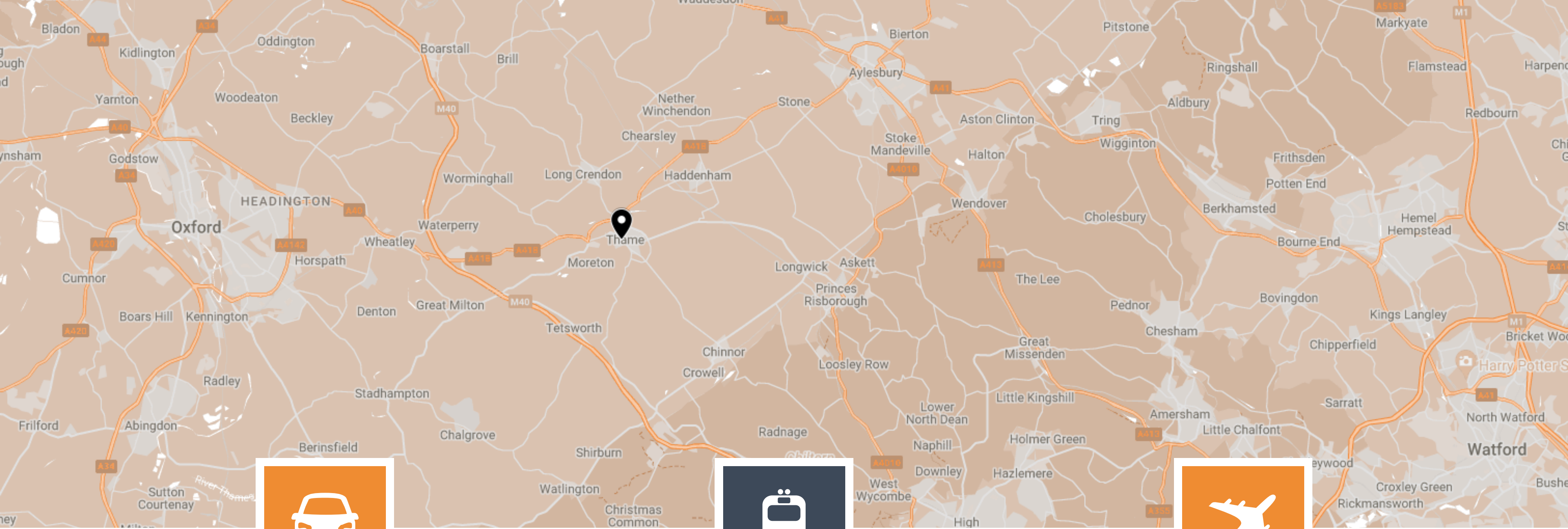
A range of restaurants, pubs, cafés and supermarkets on the doorstep providing convenient lunchtime options include Sainsbury's, Waitrose, Costa Coffee and Black Goo Café.

The town also boasts a theatre, a range of shops, barbers, hairdressers and a fitness centre.



- 1 Waitrose
- 2 Racquets Fitness Centre
- 3 Costa Coffee
- 4 Boots
- 5 Post Office
- 6 Sainsbury's
- 7 Lloyds Bank
- 8 Black Goo
- 9 Thame market
- 10 The Players Theatre

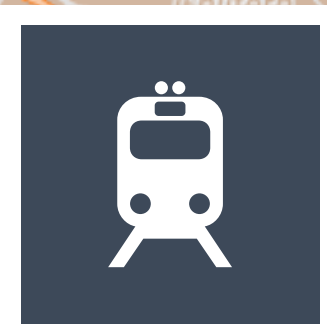




CAR

5.4 MILES TO J8A OF M40

Close to the M40 connecting London to Birmingham. Oxford City is within 15 miles, Aylesbury within 9 miles and High Wycombe within 15 miles.



TRAIN

2.7 MILES TO
HADDENHAM & THAME PARKWAY

With services to London Marylebone, Oxford and Birmingham.



AIRPORT

35 MILES TO HEATHROW AIRPORT

Worldwide connections within easy reach of Thame.

GET IN TOUCH



Nick Johnson

01844 261 121

07857 823 188

nick@fields-property.co.uk

For further information
or to arrange an
inspection please
contact our agent.

Owned and managed by:

SORBON
ESTATES

Misrepresentation clause. These particulars are set out as a general outline only for the guidance of intending purchasers or lessees and do not constitute the whole or any part of an offer or contract. The information is compiled and given in good faith but without any responsibility whatsoever. Intending purchasers or tenants should not rely on them as statements or representations of fact. February 2023.

Indicative layout and images for illustrative purposes only. Fixtures and fittings are the current tenants and are not necessarily included in the letting.