



686 SQ FT OFFICE TO LET

4 WEST LANE

HENLEY-ON-THAMES, OXFORDSHIRE, RG9 2DZ



FIRST FLOOR

686 SQ FT

(63.73 SQ M)

OFFICE SPACE TO LET

Rent: £17,150 +VAT pa

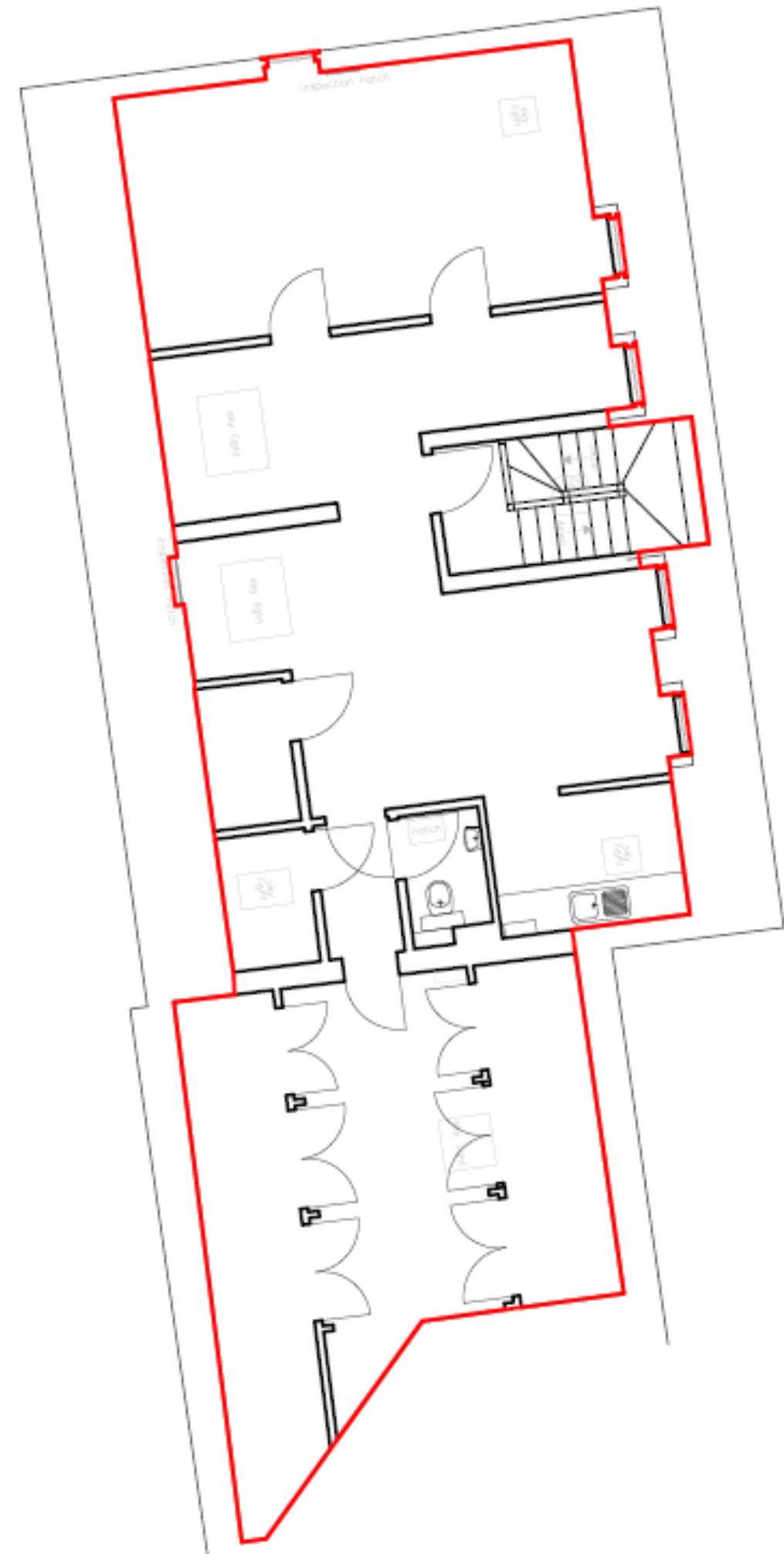
Service charge: £900 +VAT pa

Rateable value: £10,000

Rates payable: £4,990

EPC Rating: C

- Within easy walking distance of the town centre
- 4 on-site parking spaces
- Kitchen space
- Can be let as a whole or split

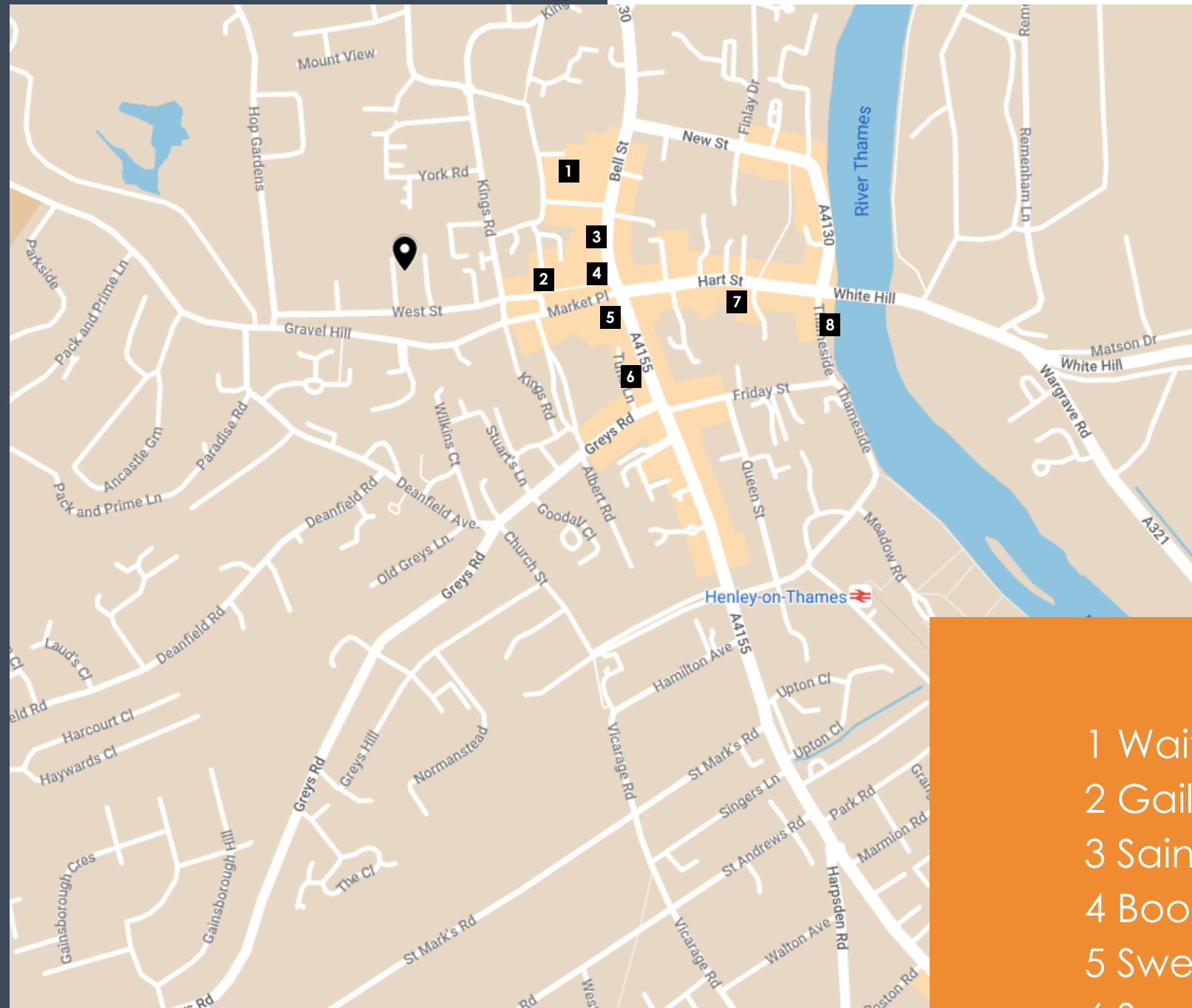


LOCATION

Henley-on-Thames offers the perfect blend of business amenities and lifestyle perks, making it an ideal location for your office.

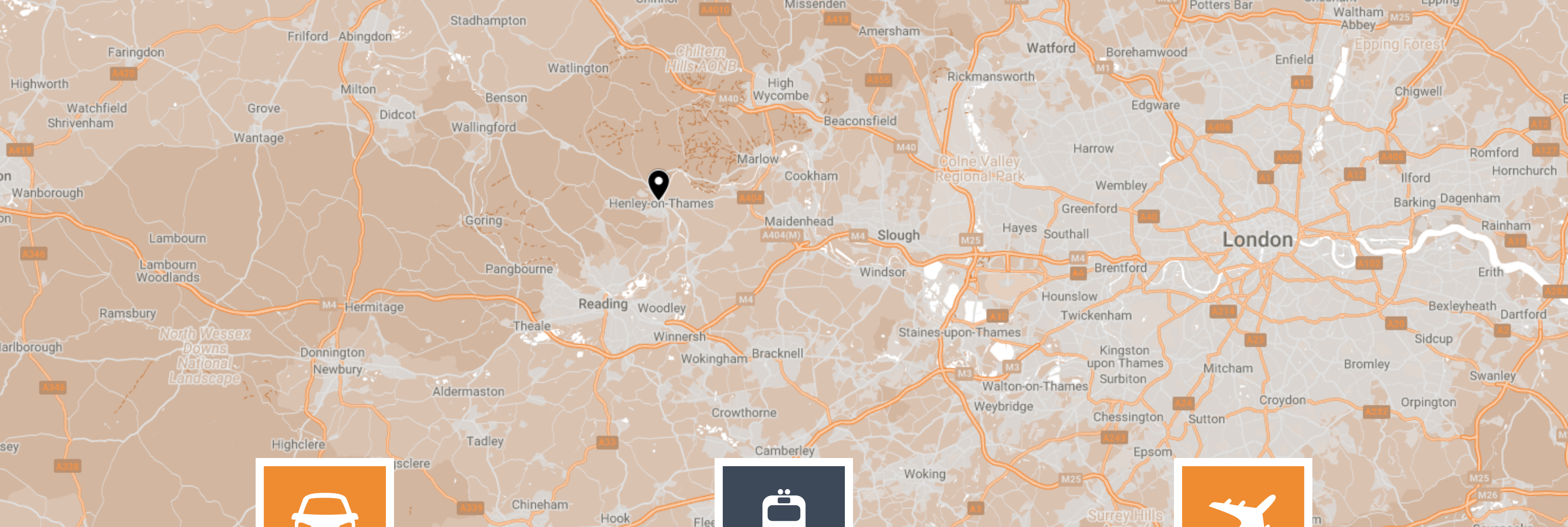
Set in the picturesque river-side town, Henley-on-Thames provides a prestigious address and great connectivity to major business hubs like London, coupled with excellent transportation links for employees and clients.

The town benefits from a wide range of shops, upscale eateries, and cultural attractions, providing ample entertainment options for clients and team outings.



- 1 Waitrose
- 2 Gail's Bakery
- 3 Sainsbury's Local
- 4 Boots
- 5 Sweaty Betty
- 6 Space NK
- 7 Giggling Squid
- 8 The Angel on the Bridge





CAR

10.2 MILES TO M4 (J8/9)
10.9 MILES TO M40 (J4)

Close to two motorway networks.



TRAIN

0.6 MILES TO HENLEY-ON-THAMES

12 minutes walk to regular Overground trains to Twyford, to change for connections into London.



AIRPORT

22.5 MILES TO HEATHROW AIRPORT

Worldwide connections within easy reach of Henley-on-Thames.

GET IN TOUCH



John Jackson

01491 571111

commercial@simmonsandsons.com

For further information or to arrange an inspection please contact our agent.

Owned and managed by:

SORBON
ESTATES

Misrepresentation clause. These particulars are set out as a general outline only for the guidance of intending purchasers or lessees and do not constitute the whole or any part of an offer or contract. The information is compiled and given in good faith but without any responsibility whatsoever. Intending purchasers or tenants should not rely on them as statements or representations of fact. March 2024.