

MARLOW

The White House
72 High Street
SL7 1AH

PRIME RETAIL
UNIT TO LET

3,633 SQ FT (337.51 SQ M)





JOIN MARLOW'S VIBRANT RETAIL COMMUNITY

72 High Street is situated in the heart of Marlow, an affluent town located on the River Thames in Buckinghamshire. The High Street serves as the town's dominant retail thoroughfare and offers an array of high quality independent and national shops, restaurants, cafés, wine bars and pubs.

Key occupiers include Tom Kerridge's The Butcher's Tap & Grill and The Coach, Toast, Mint Velvet, Gail's, M&S, The White Company, Boots, Sweaty Betty, Megan's Restaurant, Crew Clothing, Everyman Cinema, The Ivy and Scamp and Dude.

WE SPOKE TO MARLOW BUSINESS OWNERS TO UNDERSTAND "WHY MARLOW?"

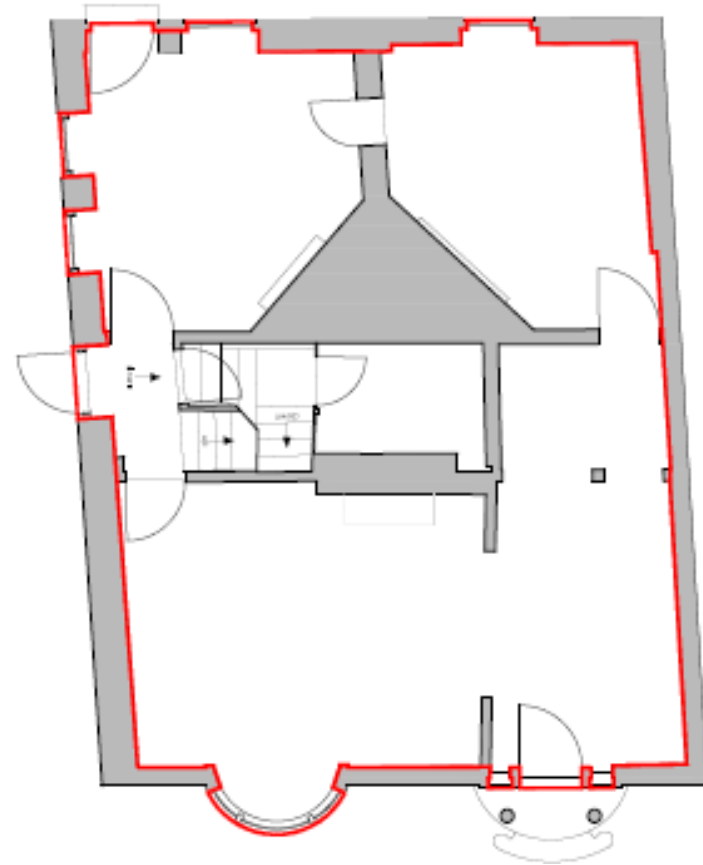


Scan to play

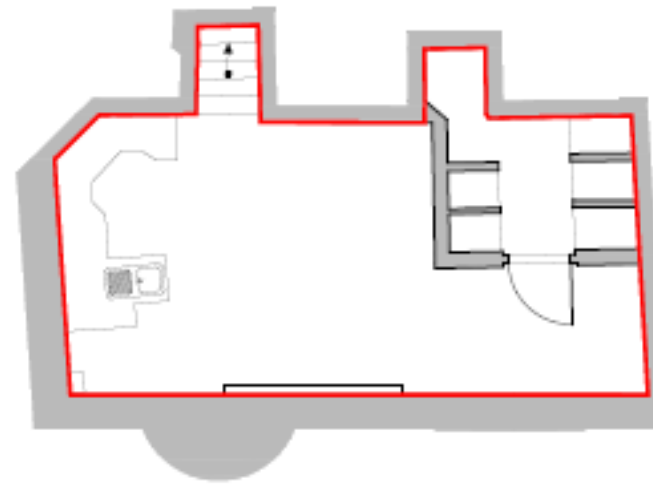


Click to play

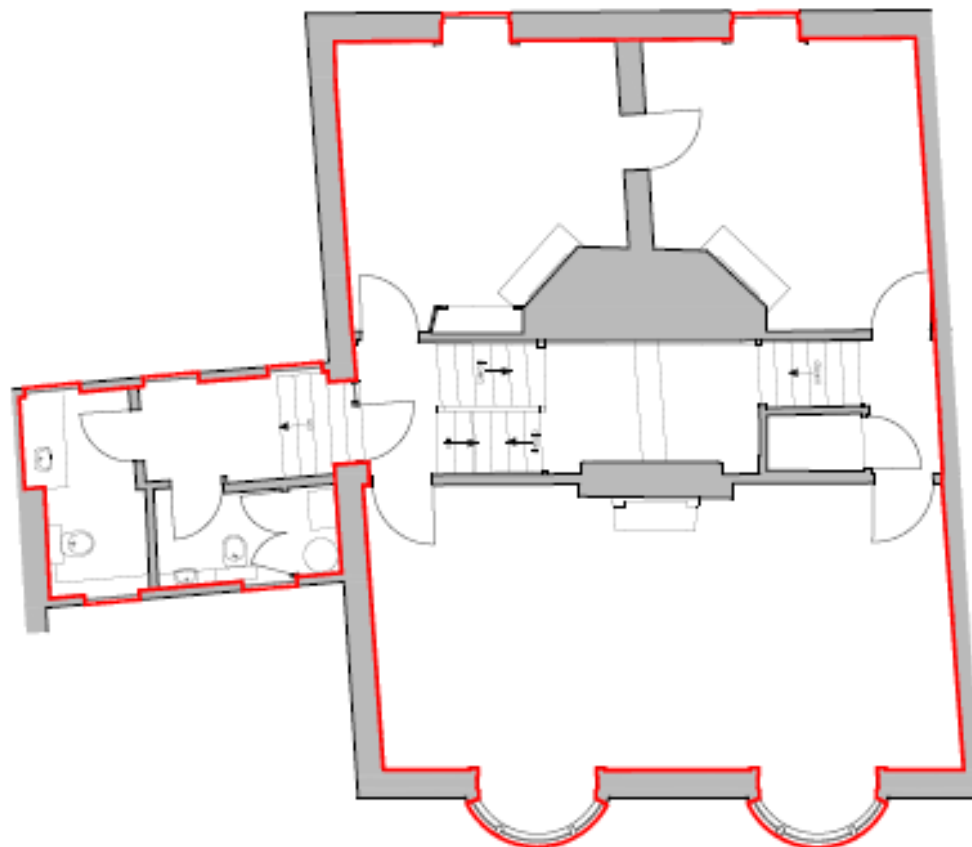
PROPERTY DETAILS



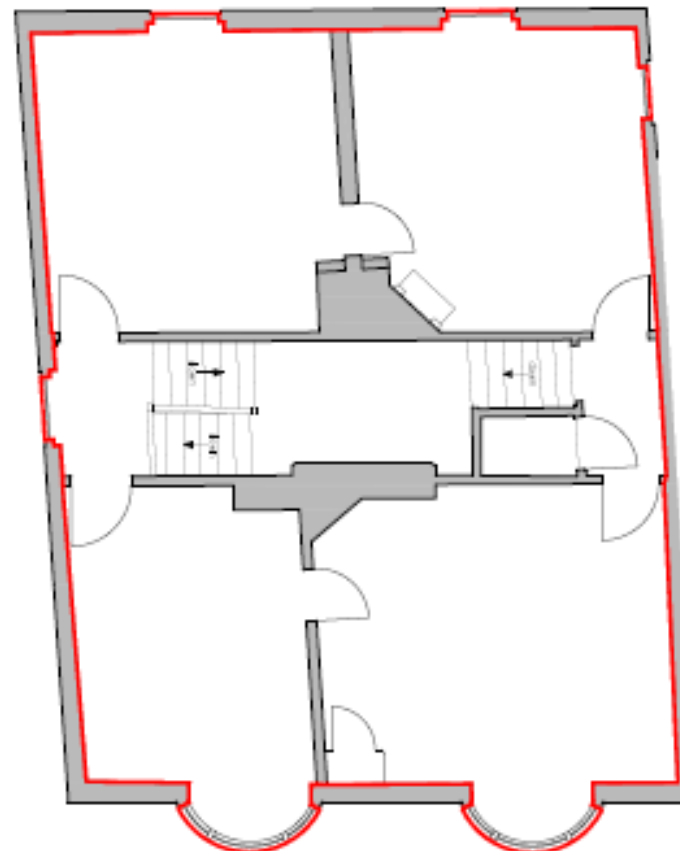
GROUND FLOOR
1,007 SQ FT
(93.61 SQ M)



BASEMENT
373 SQ FT
(34.65 SQ M)



FIRST FLOOR
1,176 SQ FT
(109.28 SQ M)



SECOND FLOOR
1,076 SQ FT
(99.97 SQ M)

RENT

Available on request

BUSINESS RATES

We are advised by the local authority that the premises has the following assessment:

UBR (24/25): 54.6p
Rateable Value: £53,500
Rates Payable: £29,211

All parties are advised to make their own enquiries to the relevant authority.

EPC

C (57)

CLASS

Class E Use

LEGAL COSTS

Each party to be responsible for their own legal costs incurred in this transaction.

TERMS

A new full repairing and insuring lease for a term to be agreed.







804 SPACES ACROSS 7 TOWN CENTRE CAR PARKS + 1 HOUR FREE STREET PARKING



2.5 MILES TO J8/9 OF M4
3.2 MILES TO J4 OF M40



0.5 MILES TO MARLOW TRAIN STATION



20.9 MILES TO HEATHROW AIRPORT



34 MILES FROM CENTRAL LONDON

YOUR NEIGHBOURS

GAIL'S

TOAST

THE IVY
MARLOW GARDEN



M&S
SIMPLY
FOOD

SPACE NK

R. M. WILLIAMS
EST. 1932. AUSTRALIA

THE WHITE COMPANY
LONDON



Sweaty Betty



MINT VELVET

EVERYMAN

FAIRFAX & FAVOR
ENGLAND

JIGSAW
EST. 1970

The
Hand &
Flowers

GET IN TOUCH



OLIVER CHURCH

07738 195 557

oliver@arcane-re.co.uk



JACK HESKETH

07791 154 172

jhesketh@klm-re.com

Owned and managed by:



For further information or to arrange an inspection please contact our agents.

Misrepresentation clause. These particulars are set out as a general outline only for the guidance of intending purchasers or lessees and do not constitute the whole or any part of an offer or contract. The information is compiled and given in good faith but without any responsibility whatsoever. Intending purchasers or tenants should not rely on them as statements or representations of fact. August 2024.